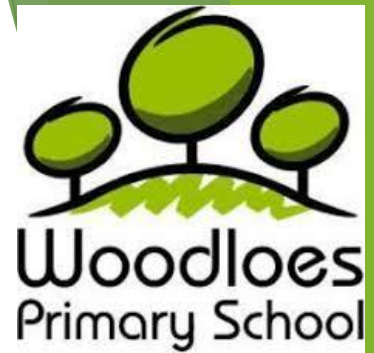




Year 4 Curriculum Information

2023-2024

The Year 4 Team



4G Teacher

Miss Goodrick

4A Teacher

Autumn a:

Mrs Barlow (Monday, Tuesday and Friday)

Mrs Morris (Wednesday and Thursday)

Autumn b onwards:

Mrs Astley

Year 4 Teaching Assistants

Mrs Dunkley

Mrs Stopps

Year 4 Routines and Resources

Entering and exiting the school

Unless your child attends OSCAR or an after school club:

- ▶ Your child should enter the school building through the main KS2 door (on the playground) at 8.45am. Doors will close at 8.55am so if your child is late they will need to enter and sign in via the school office.
- ▶ Pupils will be dismissed at 3.20pm via the same KS2 doors to their waiting adult. If a different adult is collecting your child, please inform the Admin team.

PE

- ▶ This term, Year 4 will be having P.E. on a Wednesday and Thursday.
- ▶ Your child will need to bring into school the agreed named school PE Kit (a white t-shirt, black joggers/shorts, plimsoles/trainers and a fleece/ hoody for colder weather).
- ▶ Your child can keep their P.E. kit in their locker.
- ▶ Later in the year, one of the weekly PE sessions will be swimming which is led by trained instructors at St. Nicholas Park Leisure Centre

Home Learning

There will be weekly homework which will be set on a Friday and due in on the following Friday, ready to mark and discuss as a class.

Weekly homework will generally include:

- ▶ A Maths sheet and English sheet
- ▶ Practising 5-10 spellings from given spelling list
- ▶ Going on Times Table Rock Stars (at least once a week)
- ▶ Reading (remember you can quiz on AR at home as well as at school)

- ▶ At times, there may be opportunities for home learning linked to the topic.

Positive post-it notes

Our 3 school rules are: *ready,*
respectful and safe.

In Year 4, we have a recognition board where if children go above and beyond with their behaviour, attitude or work produced they will be rewarded with a post-it note.

We also have class marble jars where we need to reach 20 marbles to receive an agreed reward.



Content of the Year 4 Curriculum

Linked to the requirements of the 2014 National Curriculum, the children will continue to access all areas of the curriculum.

There is a curriculum section on the website where you can view the long-term plan and skills progression for each of the curriculum areas.

On the long-term plan, as well as the content covered, it states the scheme being used to deliver this (e.g. Kapow).

Year 4 Long-Term Plan

Driver project		Autumn		Spring		Summer	
		a	b	a	b	a	b
		Intrepid Invaders	The River's Journey	Vicious Vikings	Eruptions, Eruptions, Eruptions	The Lungs of the Earth	Changing
English	Linked English texts to the driver project	Beowulf (Usborne Young Reading) Anglo-Saxon Times (Newspaper)	Journey to the River Sea	How <u>To</u> Be a Viking Viking Boy	Firework Maker's Daughter	The Great Kapok Tree The Explorer	Peril of the Bake Off
	Fiction genre	Myths and Legends	Narrative - Stories from different cultures	Historical fiction	Adventure	Narrative - Dilemma	Mystery
	Non-fiction genre	Newspaper report	Explanation text (water cycle)	Instructions	Non-chronological report	Persuasive writing – letter	Diary
	Poetry genre	Acrostic	Cinquain	Kenning	Performance poetry	Shape poetry	Riddle
	Cross-curricular writing focus	Newspaper (History link)	Water poem (Geography link)	Leaflet (Science link)	Non-chronological report (History link)	Persuasive writing (Geography link)	Diary writing (History link)
	Phonics/GPS	Baseline spellings and strategies for individual spellings Spell 'sure' words Adverbials and fronted adverbials Homophones	Strategies for individual spellings Plurals Past Tense	The g sound spell ou Contractions Prefixes – ig, igg, in, ig, Adding suffixes for more than one syllable – ing, or, end Homophones	Apostrophes for possession (singular) Ture words Prefixes – anti and inter grip, slip, flip, skip, words Homophones	Apostrophes for possession (regular plurals) Apostrophes for possession (singular and regular plurals) Sc words (science, scene) ship words Homophones	Apostrophes for possession (irregular plurals) Apostrophes for possession (regular and irregular) Homophones Suffixes – ous Prefixes recap ly suffixes
Guided Reading texts	Mary Anning: The Girl Who Cracked Open the World Death of the Dinosaurs	The Song of Sky and Sand	Daring Deeds: <i>The Mystery of the Red Moon</i> <i>Hummingbird</i> <i>The Race to the Pole</i> <i>Leaving Home</i>	Daring Deeds: <i>Pigeons Rule the Roost</i> <i>Norrock's Tale</i> <i>The Secret in the Attic</i>	Myths of the Sea anthology: <i>Sean and the Sea-Maiden</i> <i>Odysseus and the Monster</i> <i>Real Sea Monsters</i>	A Tale of Two Doables	
Maths	Maths content (White Rose)	Place Value, Addition and subtraction Measurement: Area Multiplication and division A	Multiplication and division B Length and perimeter Fractions Decimals A		Decimals B Money Time Shape Statistics Position and direction		
Science - Kapow	Animals: Digestion and Food	Energy: Electricity and Circuits	Living things: Classification and Changing Habitats	Materials: States of Matter	Energy: Sound and Vibrations	Making Connections	
Geography – Kapow		What are rivers and how are they formed?		Why do people live near volcanoes?	Why are Rainforests important to us?		

History - Kapow	How hard was it to invade and settle in Britain?		Were the Vikings raiders or peace-loving settlers?			How have children's lives changed?
D and T - Kapow	Making a slingshot car	Torches	Adapting a recipe	Pavilions	Mindful moments timer	Fasterings
Art and design - Kapow	Fabric of nature		Light and dark	Power prints		Mega materials
Computing and online safety - Kapow	Collaborative learning	Investigating weather	Online safety	Website design	Further coding with scratch Computational thinking	HTML
Music - Kapow	Romans	Rivers	Rock and roll	Hanami	Rainforests	Samba and carnival
French - Kapow	Portraits-describing in French	Clothes (getting dressed in French)	French numbers, calendars and birthdays		French food	
RE (following Discovery/jigsaw scheme)	Buddha's Teachings (Buddhism)	Christmas (Christianity)	The 8-fold path Part 1 (Buddhism)	Easter (Christianity)	The 8-fold path Part 2 (Buddhism)	Prayer and Worship (Christianity)
P.E.(following Primary P.E. planning)	Fitness Tag Rugby	Quick Sticks (Hockey) Dodgeball	Dance (Science) Gymnastics	Netball Mini Muay Thai	Swimming Cricket	Swimming Athletics Sports Day
PSHE (following PSHE 3D Scheme) and Protective Behaviours	Transition Protective Behaviours	Making Choices	Internet Use Persistence and Resistance	Realising Strengths and Setting Goals	Family and Friends	Keeping Healthy
Educational visits/trips			Viking Villagers trip at Compton Verney			

Year 4 Weekly Timetable

Woodloes Primary School Timetable Key Stage 2 Timetable Year 4



	8.45am	9.00am – 9.25am	10.20am – 10.35am	11.30am	12.00pm – 1.00pm	1.30pm	3.20pm				
Monday SB	DEAR	Registration – 8:55am	GPS/Phonic intervention groups	English	B	Maths	Guided Reading	L	Maths Meeting (Recall Session x tables)	Science	Whole School Assembly (2.45pm – 3.00pm)
Tuesday SB	Early work		GPS/Phonic intervention groups	English	R	Maths	Guided Reading	U	DEAR	Music	History
Wednesday LM	Early work		GPS/Phonic intervention groups	English	E	Maths	Guided Reading	N	DEAR	P.E.	French/R.E. (alternate weeks)
Thursday LM	Early work		GPS/Phonic intervention groups	English	A	Maths	Guided Reading	C	DEAR	Computing	P.E.
Friday SB	DEAR		GPS/Phonic intervention groups	English	K	Maths	Guided Reading	H	Maths Meeting (Recall Session x tables)	Art and Design or Design and Technology (taught in blocks)	P.S.H.E.

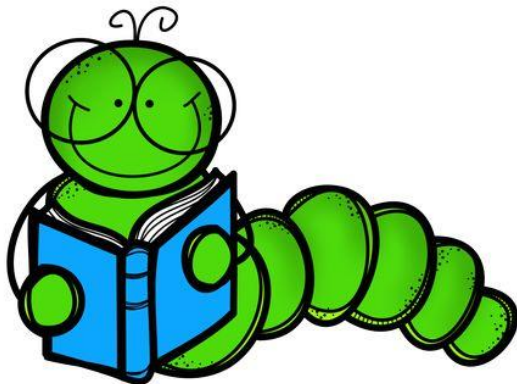
Reading at School

In Year 4, the reading focus will be fluency, comprehension and understanding.

We will teach reading through:

- ▶ Daily Guided Reading sessions following the 'Bug Club' scheme with a wide range of fiction and non-fiction texts.
- ▶ Regular DEAR (Drop everything and read) sessions (linked to Accelerated Reader)

Please remind your child to bring his/her reading book into school daily.



Accelerated Reader and Assessment

AR supports independent school and home reading:

Personalised goals help students stay focused on the factors that matter most for reading growth—and help teachers to monitor their progress and provide feedback to keep learners on track.

- ▶ Each pupil completes a half-termly Star Reading assessment to determine their comprehension level - ZPD (zone of proximal development) which are shared with the children)
- ▶ Each child selects their individual reading book according to their AR score (school books are colour coded to enable children to choose their book independently)
- ▶ Once a book is completed, the pupil completes a reading comprehension quiz (on Accelerated Reader) to assess their understanding.
- ▶ Teachers monitor quiz results weekly and feedback to pupils.

Please encourage your child to read regularly at home. This is in addition to the daily reading we are doing at school and part of their weekly designated homework. The school target is for an engaged reading time of at least 15 minutes per day.



Accelerated
Reader



Reading for pleasure from a variety of authors is an important activity for all children and should be actively encouraged by all parents. Children who read more, make more rapid progress across the whole curriculum. Children are encouraged to read four times a week at home as a minimum.



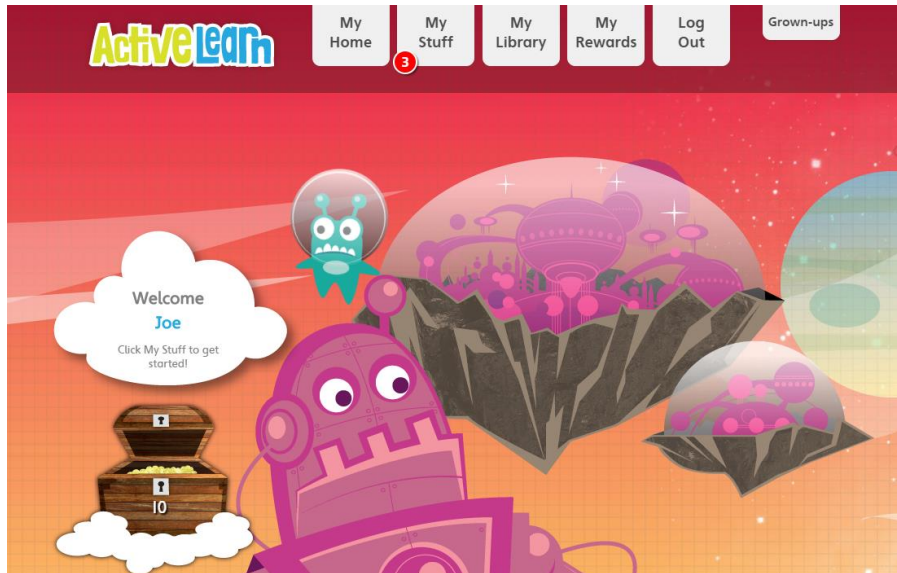
Bug Club Phonics is used for all children learning to read across the school until they reach fluency within phase 6.



Accelerated Reader is used for independent reading once children are fluent readers and have an understanding of comprehension.

There is now a Reading at Home section on the website with links to bug club and AR log in pages, a phonics video and parent guides.

Bug Club Phonics Ebooks (for those pupils receiving additional Phonics support)



www.activelearnprimary.co.uk

School Code: garq

Pupils will be issued with their own log in details and allocated digital books to read based on their current reading assessment by their class teacher.

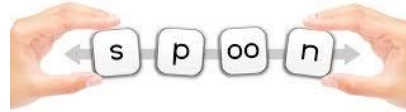
The 'Grown-Ups' section will provide more information about your child's progress and how to support their reading at home.

Teachers will access your child's page weekly to see which books have been read and how your child is progressing.

Helping new or struggling readers

One book three times

•Decoding through segmenting and blending using phonics sounds



•Fluency to create more familiarity with word and build sight recognition

Fluency



I can read accurately with expression.

•Comprehension - talk and discussion



AR Home Learning – New for 2023!



- ▶ To encourage more independent reading at home, pupils will now have access to AR at home until 6pm from Monday to Friday.
- ▶ Quizzing can take place at home to improve engaged minutes.
- ▶ Each child has a weekly target of 15 engaged minutes per day.
- ▶ Children are encouraged to reach 1,000,000 words during the year to earn a book voucher reward and certificates.
- ▶ Parents can now sign up for Home Connect email to be informed of their child's progress and quiz scores.

AR Home Connect



Log in must be through the school's URL link on the school website.

Pupil's will be issued with their own log in.

<https://global-zone61.renaissance-go.com/welcomeportal/2249453>

Once you child has logged in,
Select the 'Get Email updates' button.

A screenshot of the Accelerated Reader user interface. At the top left, there is an orange 'Accelerated Reader' logo. Below it, the text 'Star Assessments' is displayed. Underneath, there are two blue buttons: 'Star Early Literacy' and 'Star Reading'. To the right, there is a dropdown menu showing 'All Assignments' and 'Everyone'. Below this, a list of four completed reading practice quizzes is shown, each with a green checkmark. The quizzes are: 'Reading Practice Quiz: Floss', 'Reading Practice Quiz: Roll Over Roly', 'Reading Practice Quiz: Wash, Scrub, Brush!', and 'Reading Practice Quiz: The Very Hungry Caterpillar'. At the bottom of the list, it says 'Page 1 of 1'. Below the list, there is a section titled 'For Parents and Guardians' with a button that says 'Get Email Updates' and the subtext 'Track your child's work'.

Writing

Year 4 writing is linked to the half termly driver topic texts. For example, linked to our first topic of Intrepid Invaders, one of the texts studied is Beowulf.

Within each half term, the different writing genres of narrative, poetry and non-fiction are explored.

Children will continue to use the Letterjoin handwriting style.

GPS



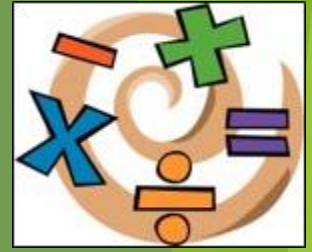
- Grammar, Punctuation and Spelling (GPS) will be taught daily during the school week.
- Some Year 4 pupils will be accessing Phonics sessions during the daily GPS sessions.
- Spelling and handwriting will be taught within these sessions (you child also has a copy of their spelling list in their homework books)

Spellings

- Children can also practise their spellings by playing games at home such as Scrabble, Boggle and Spooky Spellings

<https://www.ictgames.com/mobilePage/spookySpellings/>

Maths in Year 4

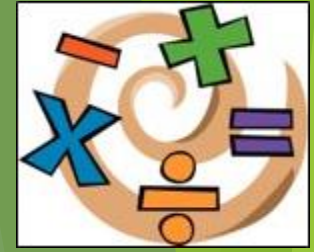


- ▶ In daily maths sessions, there are links to prior learning, fluency, reasoning and problem solving activities. These are all aspects of maths which enable your child to master the curriculum by ensuring that they are fluent before they move on,
- ▶ In addition, there will be maths meetings to consolidate previous learning.

How do we assess learning in Year 4?

Children are assessed through both formal and informal methods.

These are used to inform staff as to how to support your child to enable them to reach their full learning potential. These assessments can include written tests as well as evidence from attainment in daily lessons.



Multiplication Tables Check

- ▶ Your child will be participating in the multiplication tables check in June. The purpose of the check is to determine whether your child can fluently recall their times tables up to 12, which is essential for future success in mathematics.

This check is a national requirement

What is the multiplication tables check?

- ▶ It is an on-screen check consisting of 25 times table questions. Your child will be able to answer 3 practice questions before taking the actual check. They will then have 6 seconds to answer each question.
- ▶ The check has been designed so that it is inclusive and accessible to as many children as possible, including those with special educational needs or disability (SEND) or English as an additional language (EAL).
- ▶ There may be some circumstances in which it will not be appropriate for a pupil to take the check. This will be discussed with you if required.

How do we prepare your child for this?

- ▶ Practising Times Tables Rock Stars (as part of their home learning)
- ▶ Weekly Tables Championship sheets (these are completed at school and sometimes brought home)
- ▶ Online maths games (e.g. hit the button and daily 10)

Reading Hero Volunteers

Do you have a spare afternoon during the week and would like to become a Reading Hero?



Please let the office staff know if you would like to volunteer.

Any questions?

